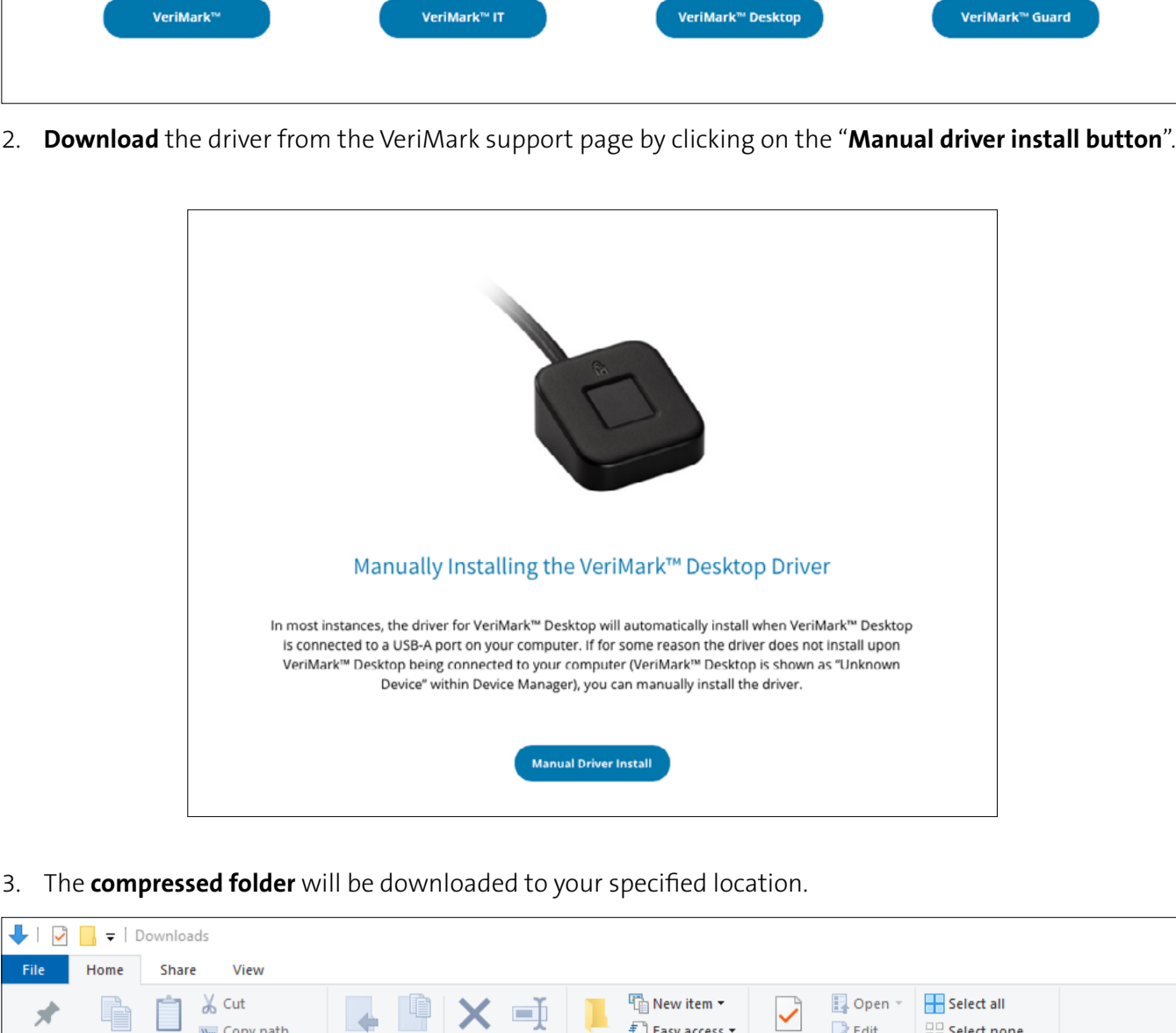


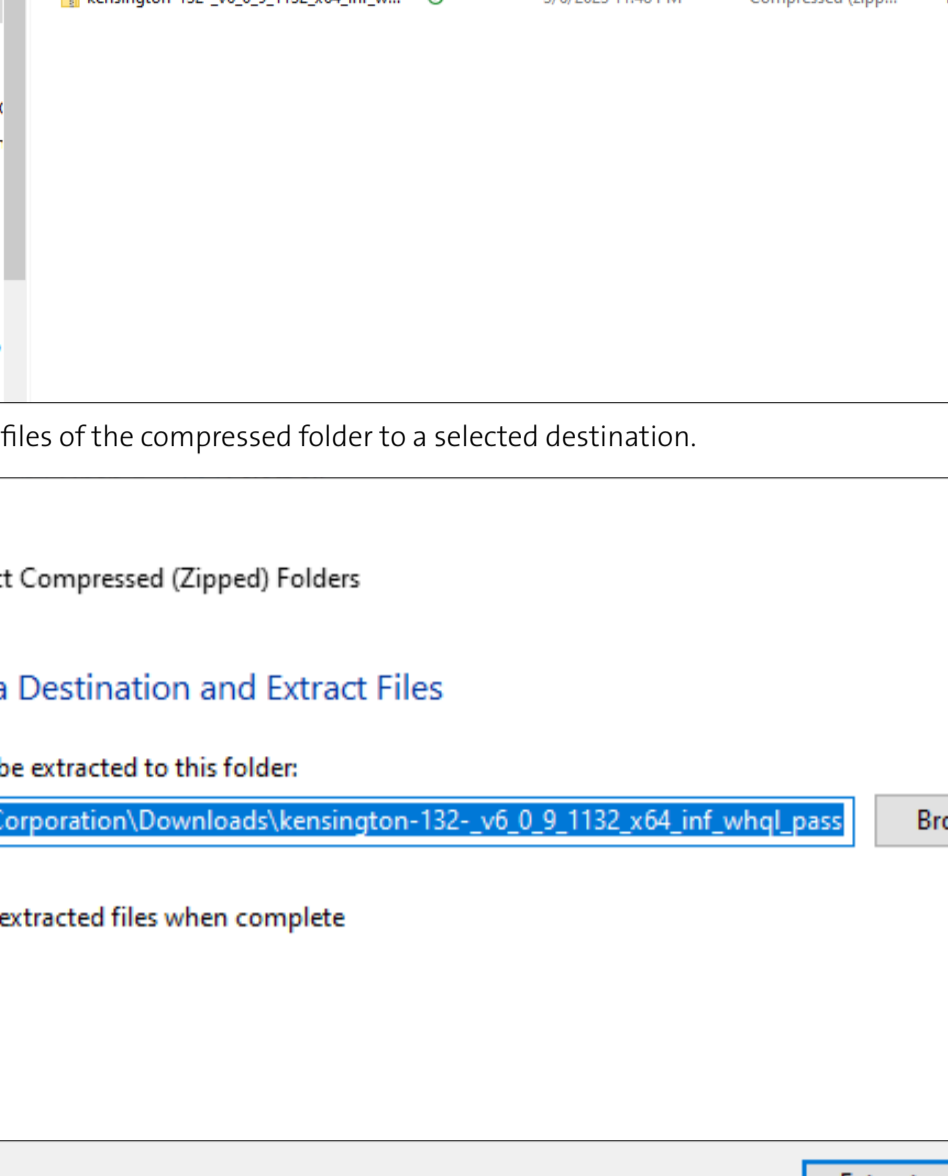
## VeriMark Desktop Windows 11 Manual Driver Install

### Install the driver through Windows 11 Manual driver install

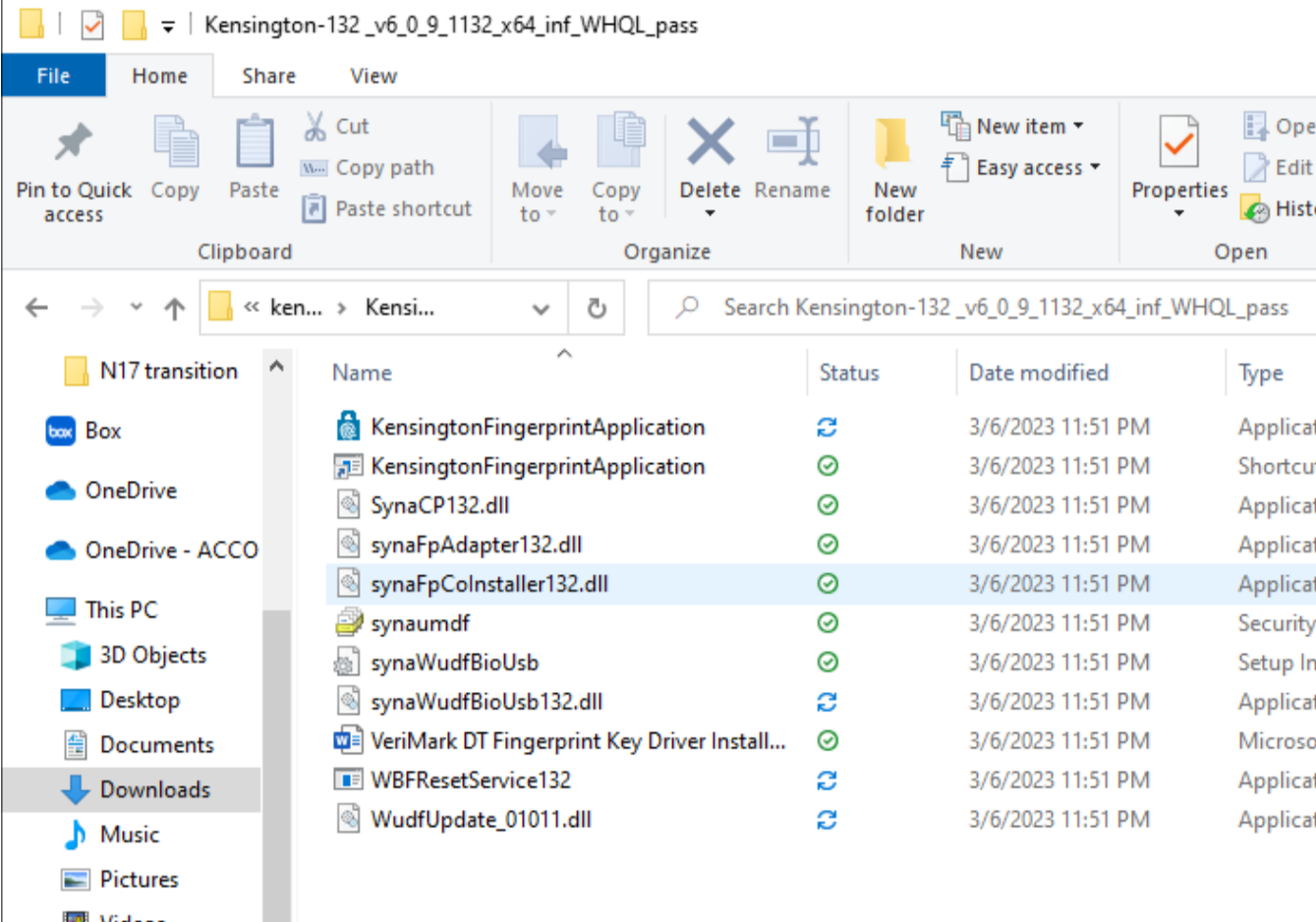
1. On the VeriMark support page, select **VeriMark** to go to the setup guides and driver download.



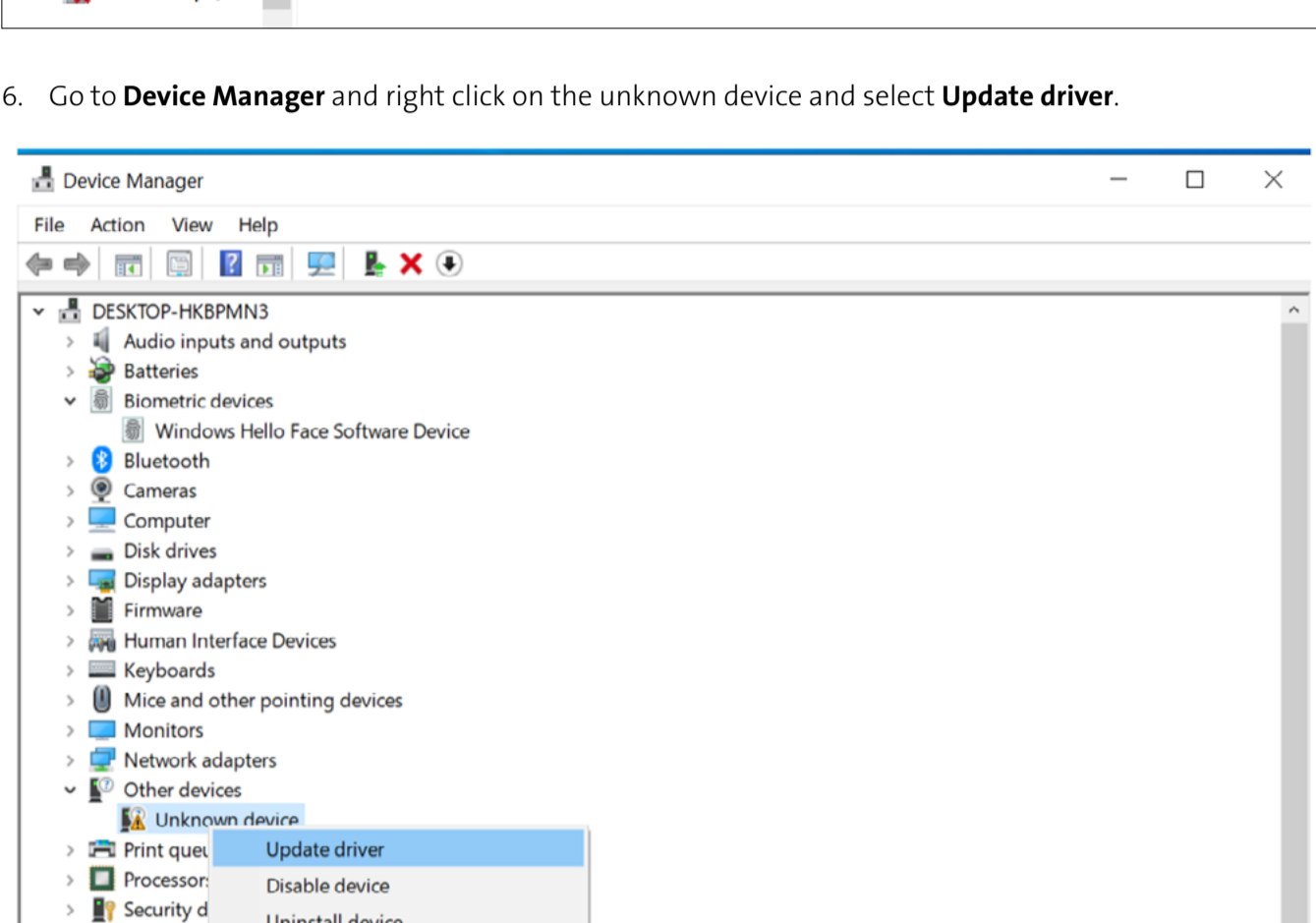
2. Download the driver from the VeriMark support page by clicking on the **"Manual driver install button"**.



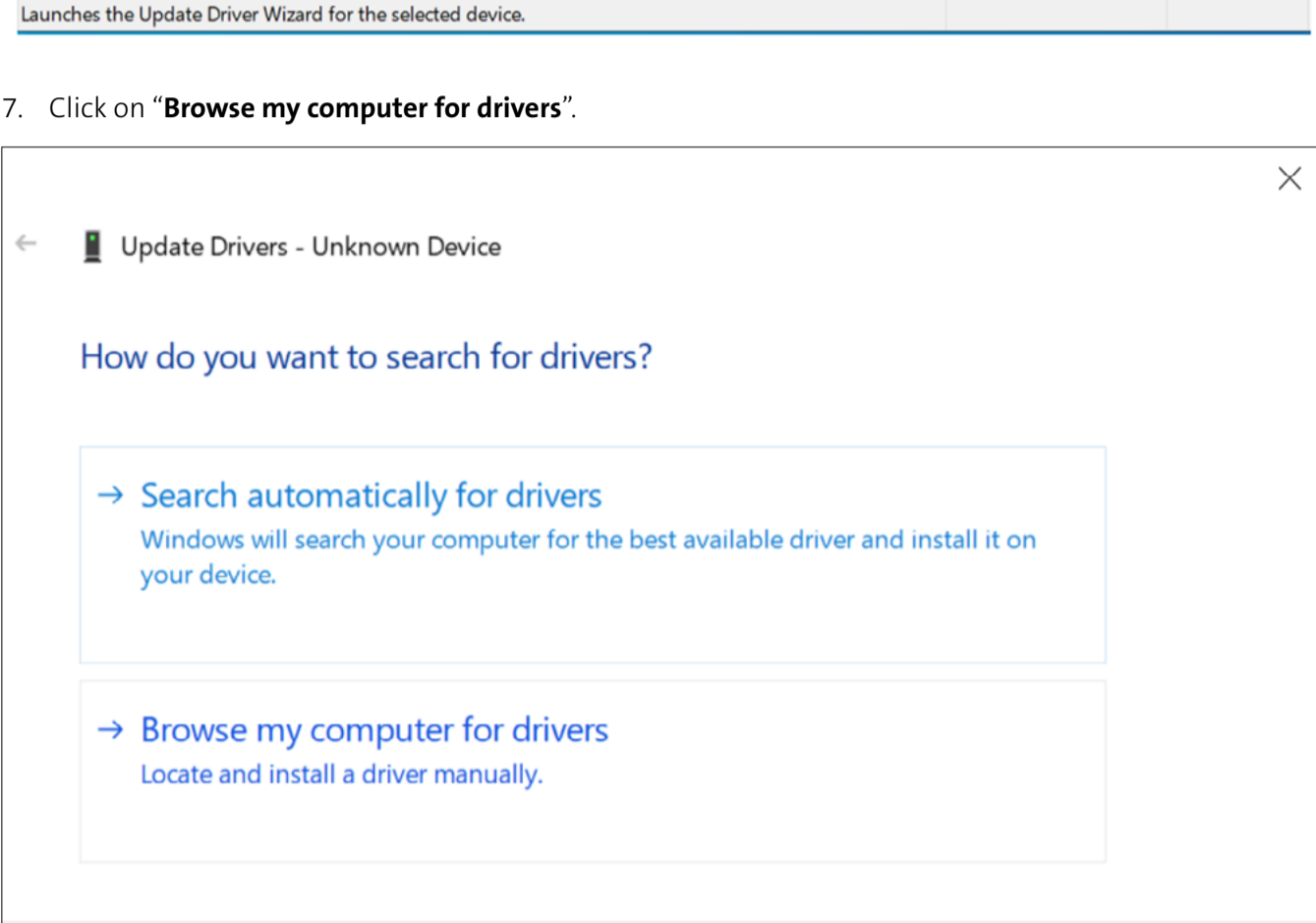
3. The **compressed folder** will be downloaded to your specified location.



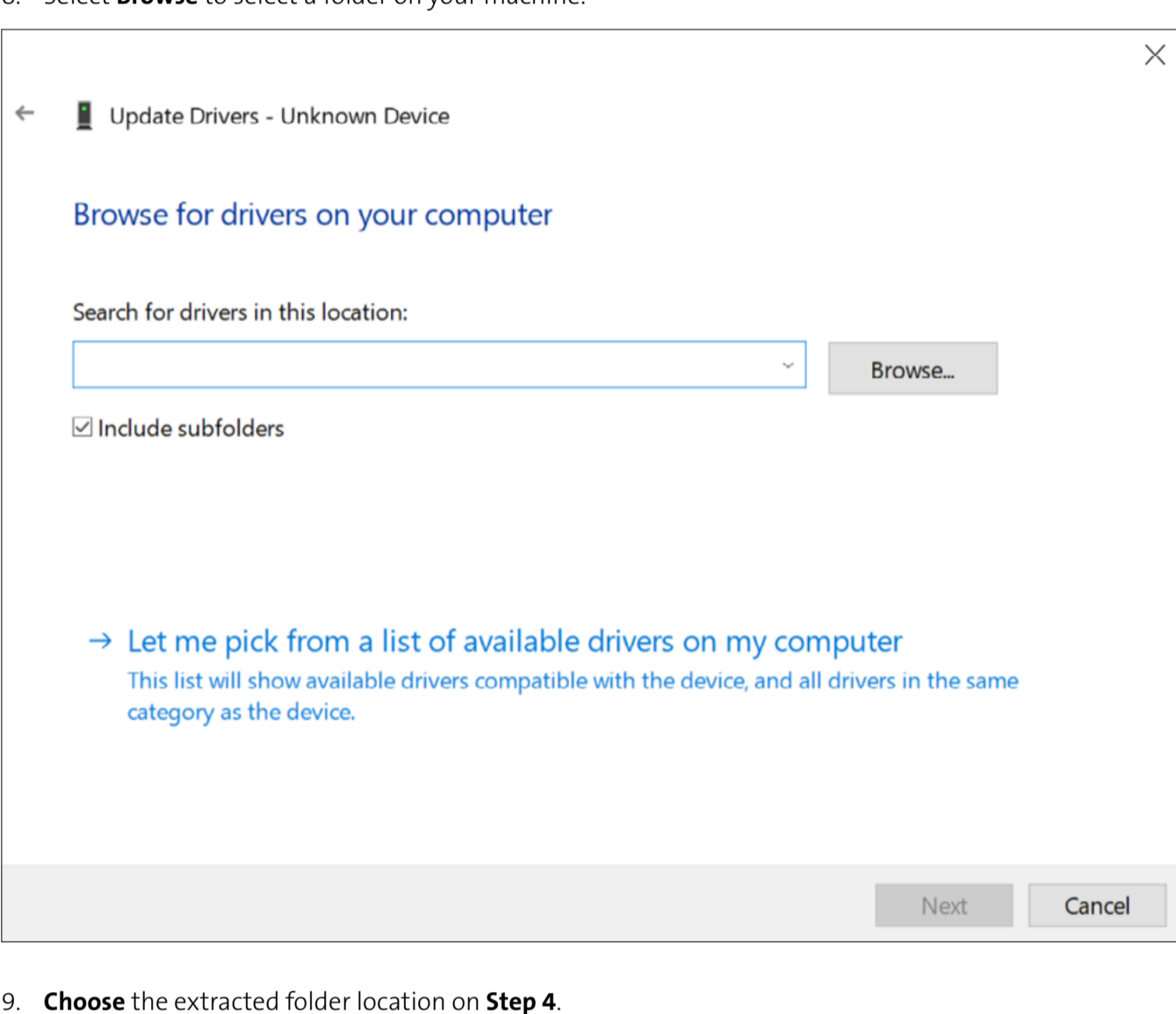
4. Extract the files of the compressed folder to a selected location.



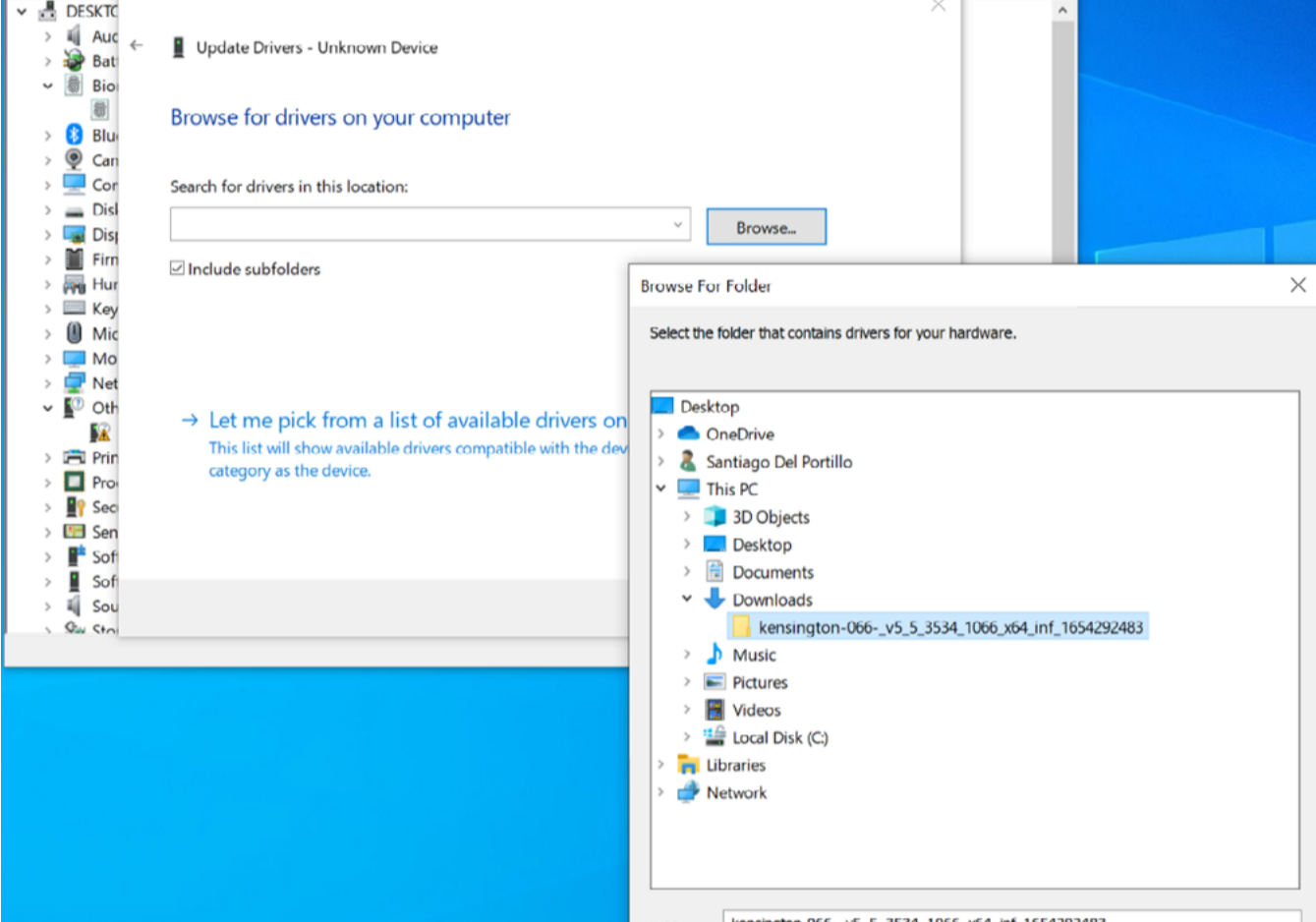
5. A **folder** with the extracted files will be created.



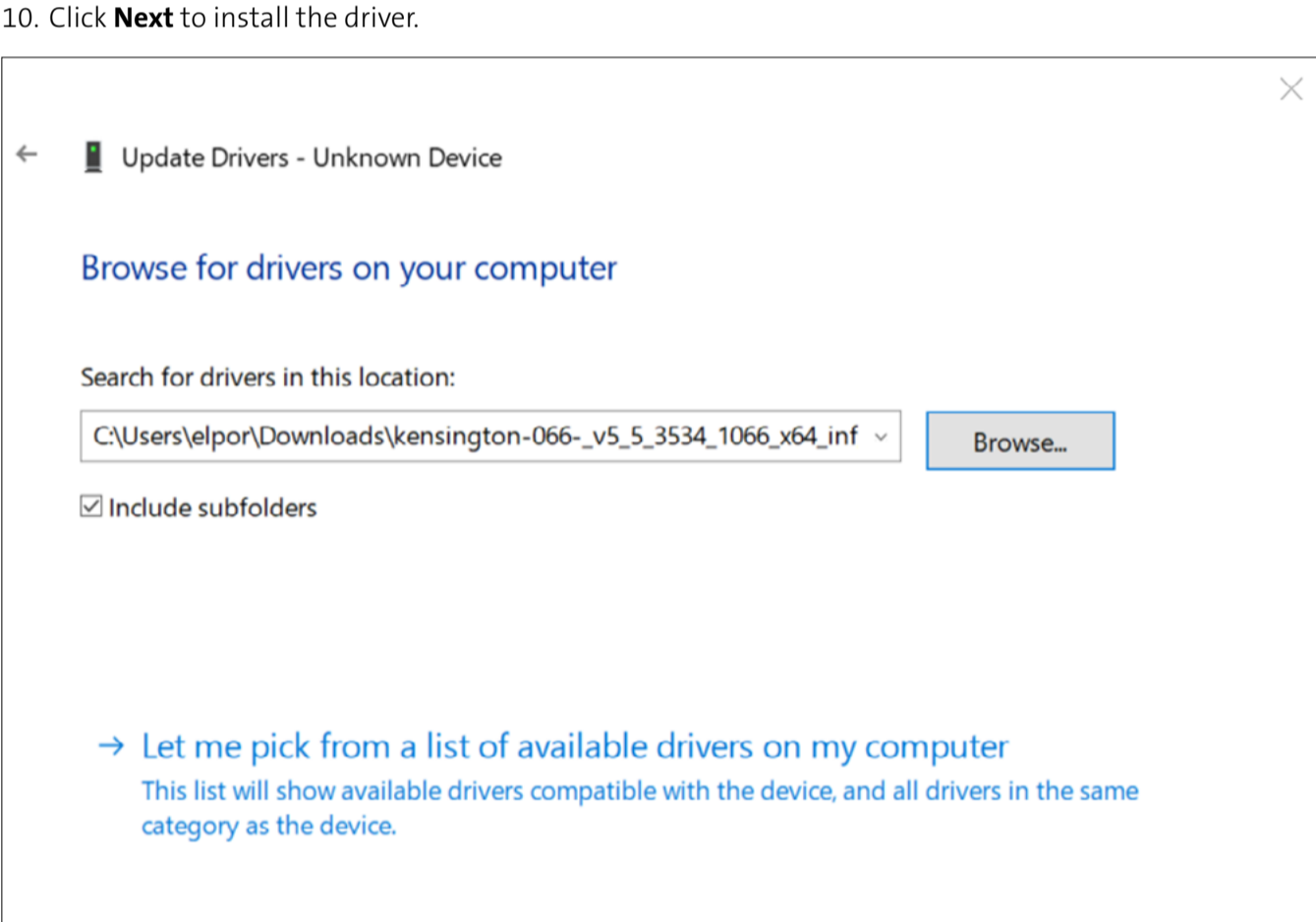
6. Go to **Device Manager** and right click on the unknown device and select **Update driver**.



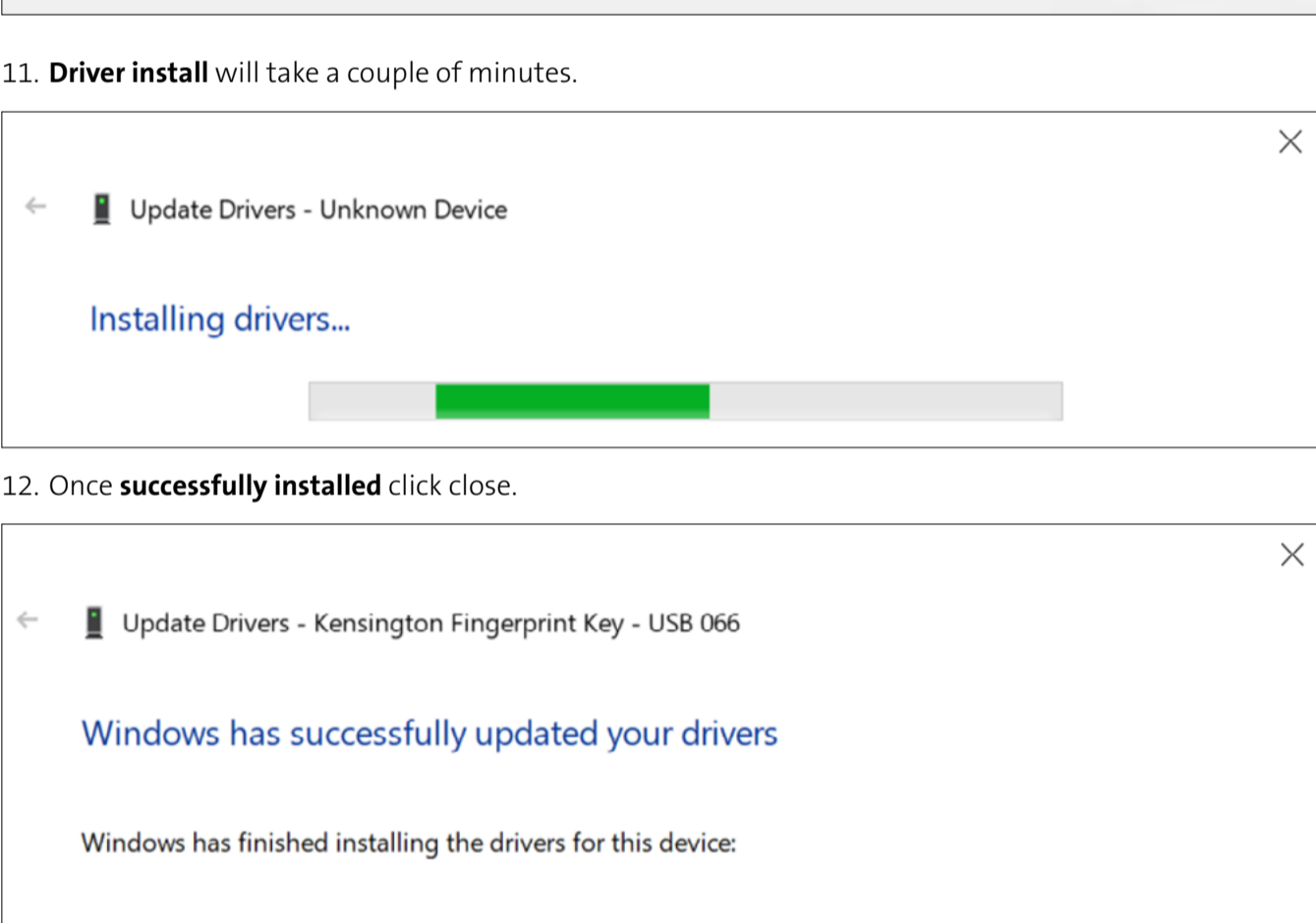
7. Click on **"Browse my computer for drivers"**.



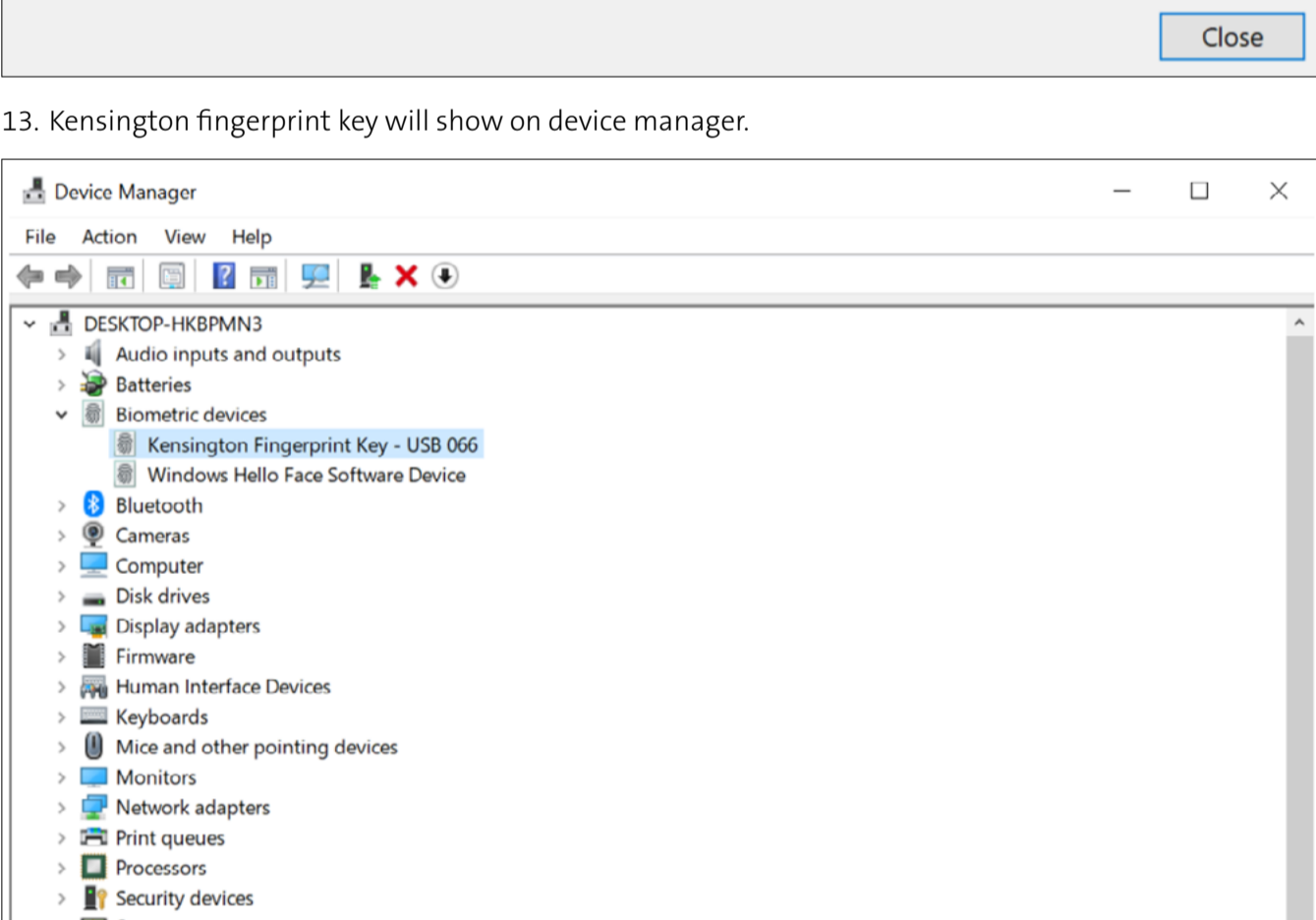
8. Select **Browse** to select a folder on your machine.



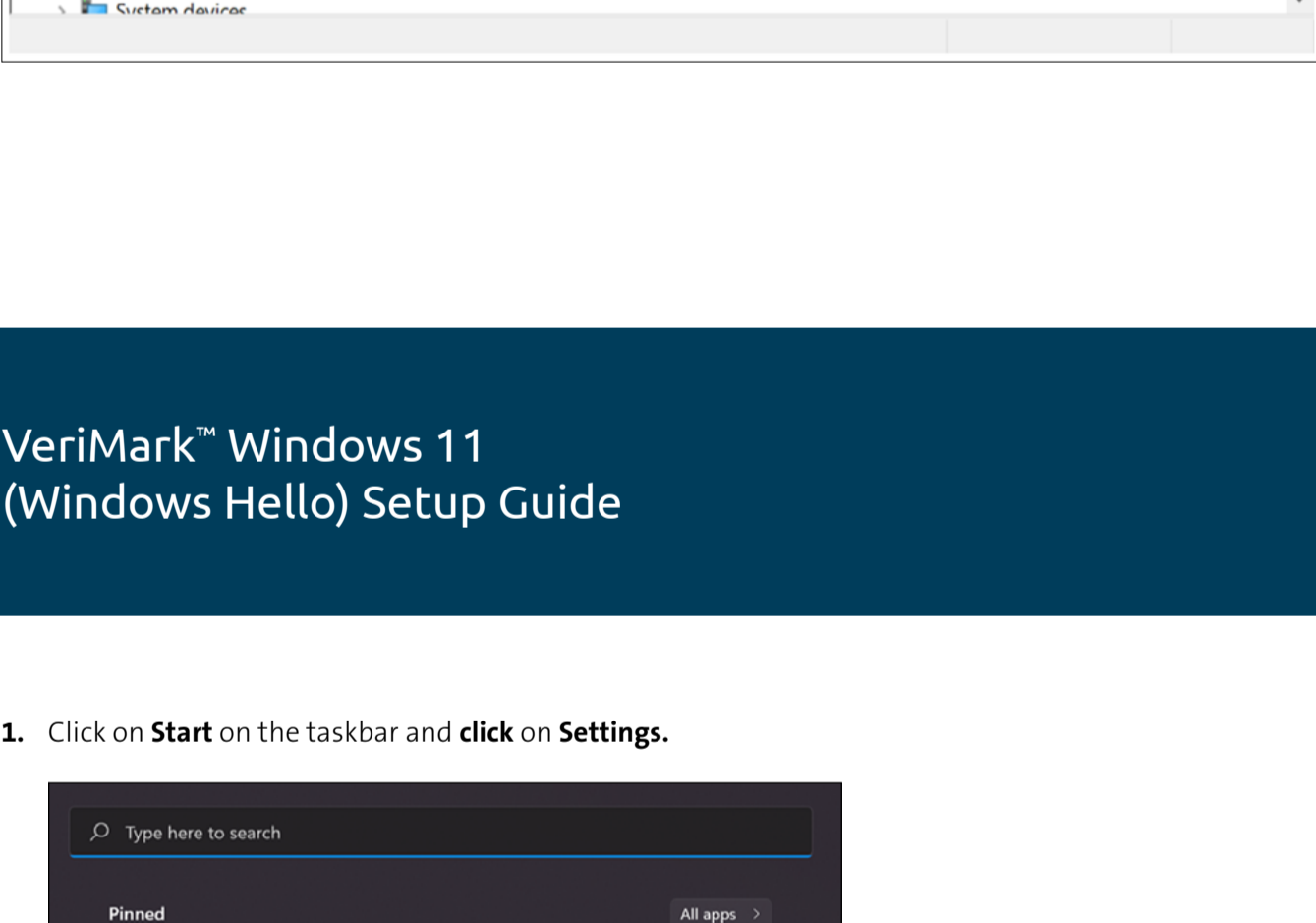
9. Choose the extracted folder location on **Step 4**.



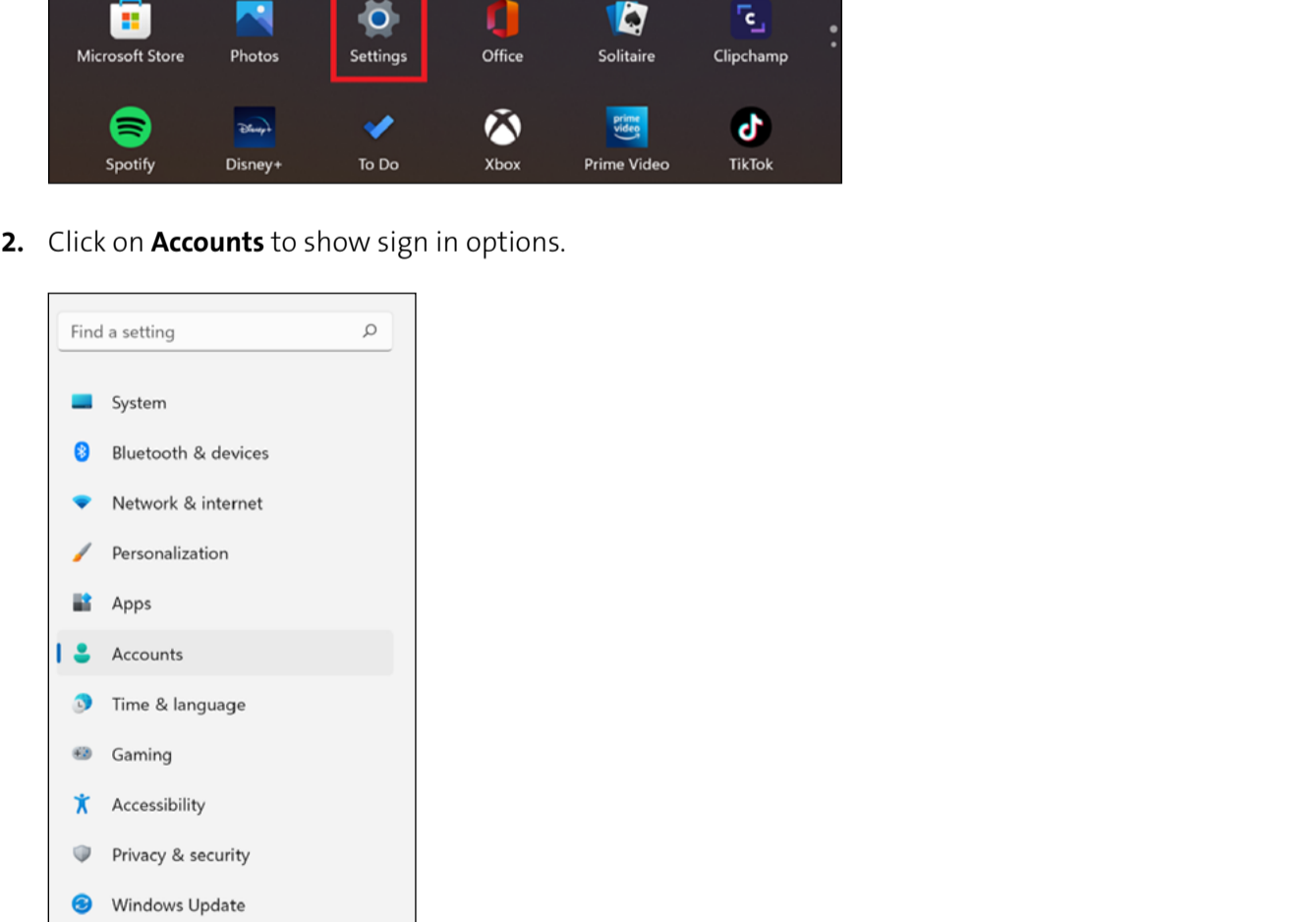
10. Click **Next** to install the driver.



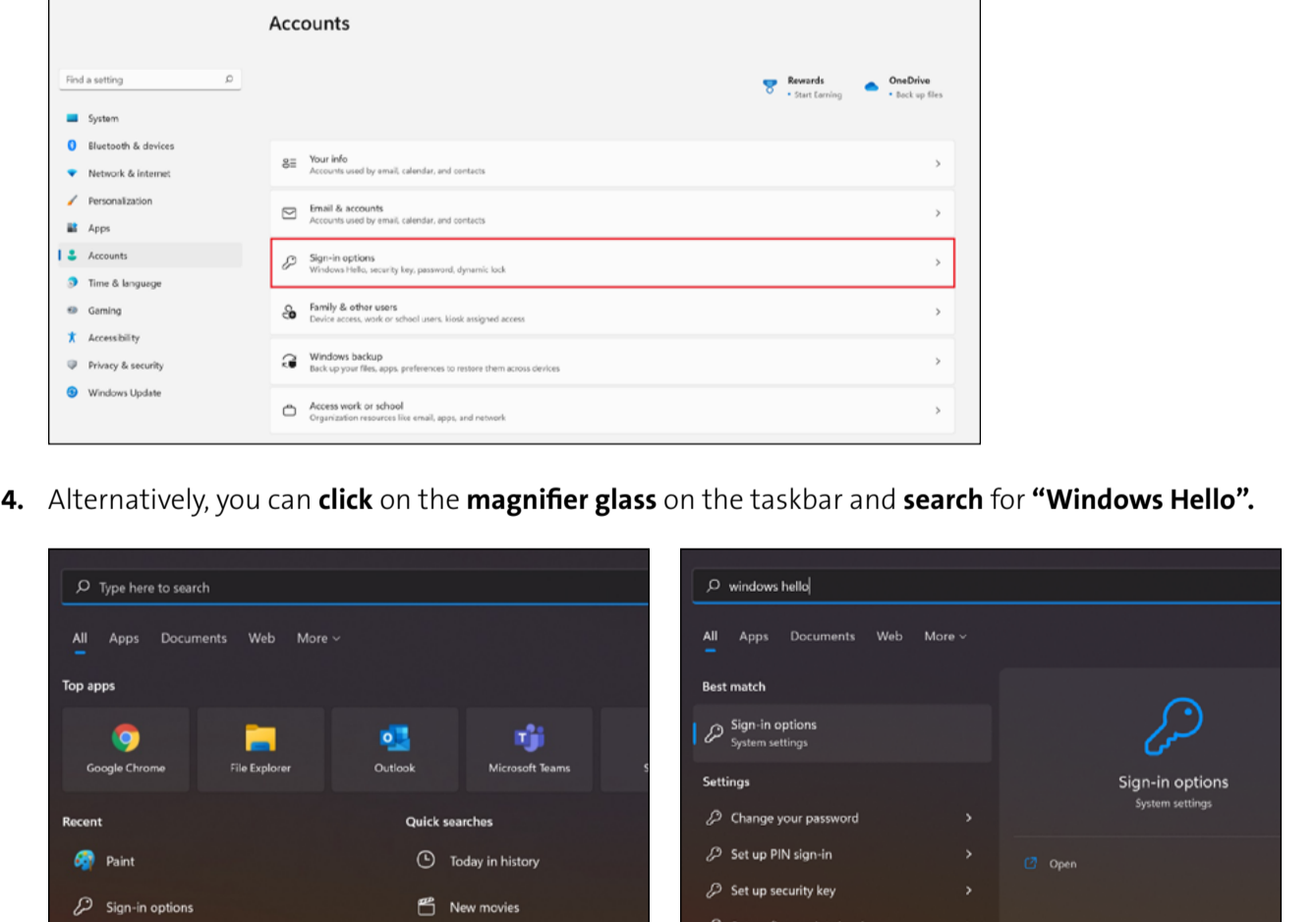
11. **Driver install** will take a couple of minutes.



12. Once **successfully installed** click close.

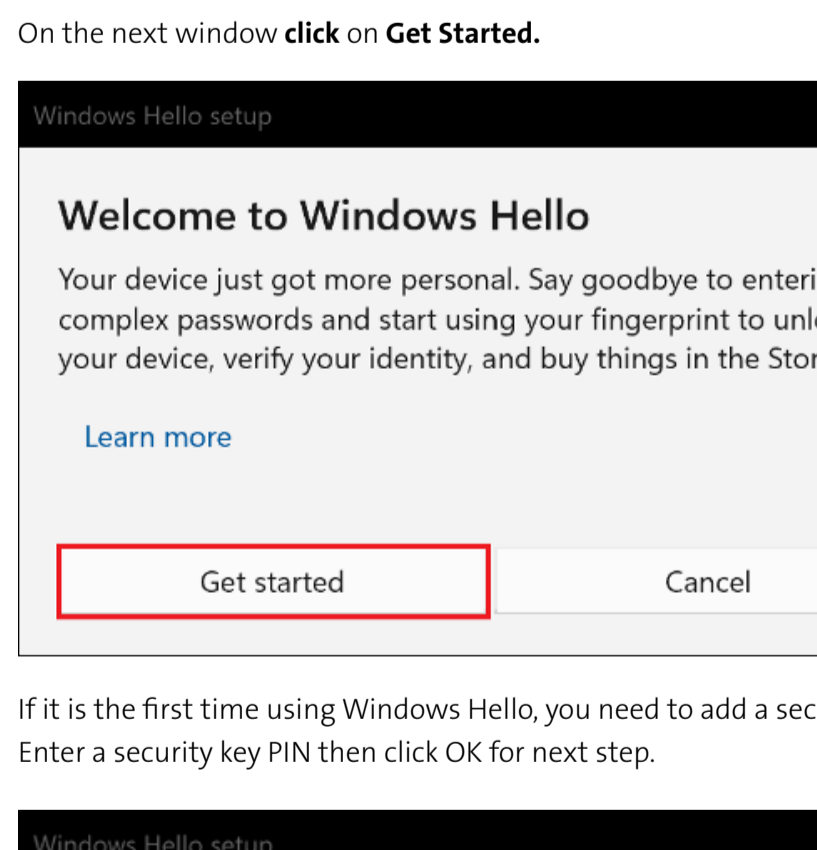


13. Kensington fingerprint key will show on device manager.

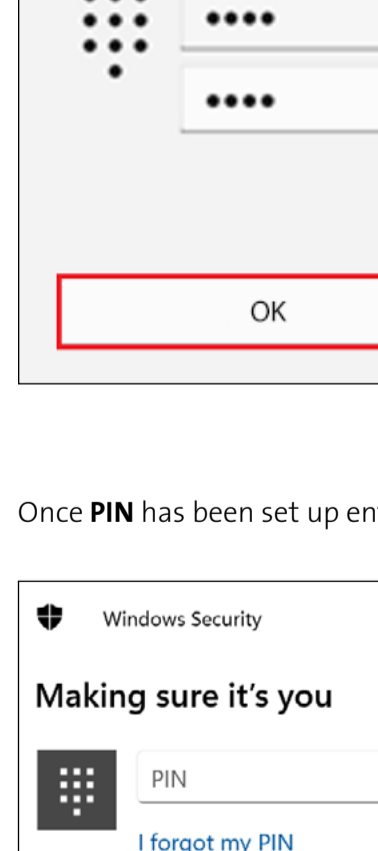


## VeriMark™ Windows 11 (Windows Hello) Setup Guide

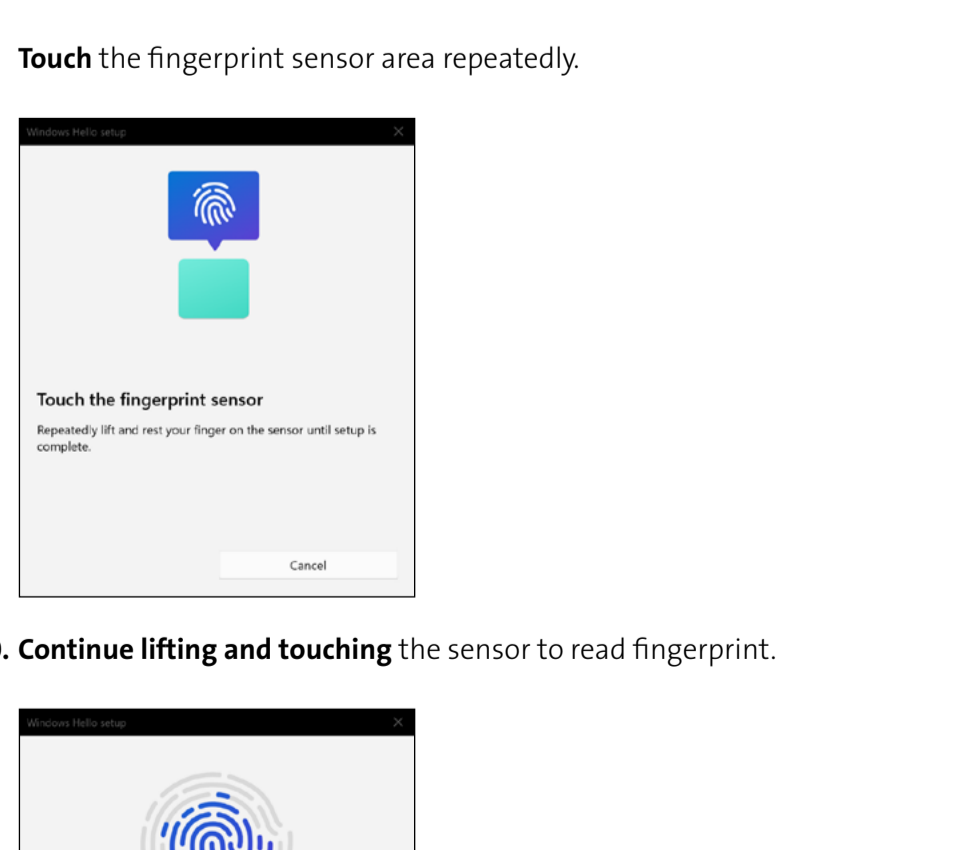
1. Click on **Start** on the taskbar and click on **Settings**.



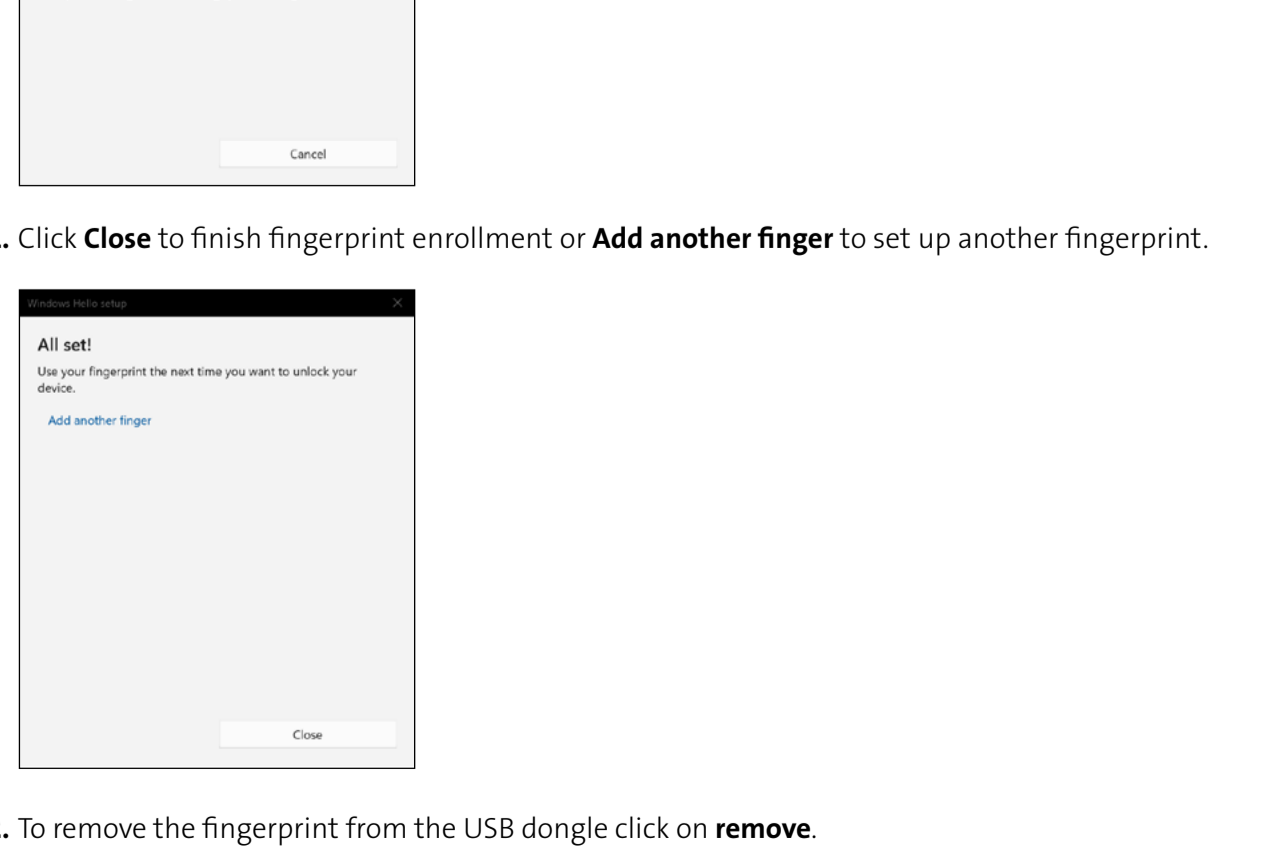
2. Click on **Accounts** to show sign in options.



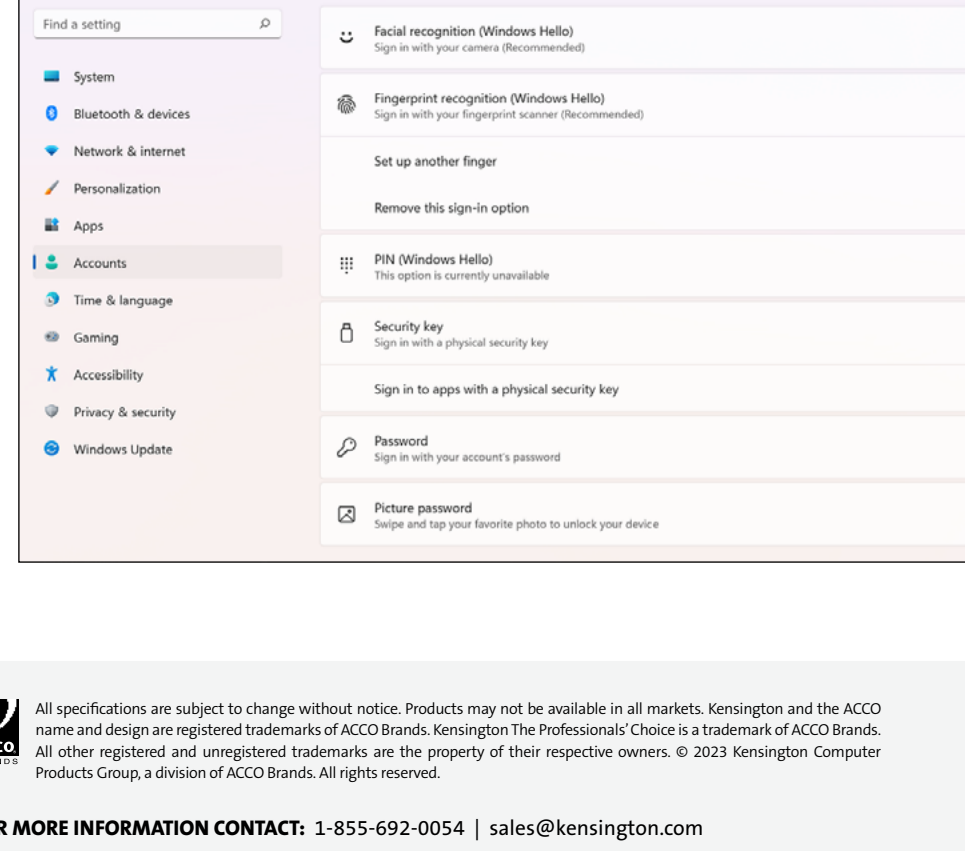
3. Click on **Sign-in** options.



4. Alternatively, you can click on the **magnifier glass** on the taskbar and search for **"Windows Hello"**.



5. Click on **Fingerprint recognition (Windows Hello)** and **Set up**.



6. On the next window click on **Get Started**.



7. If it is the first time using Windows Hello, you need to add a security PIN. Enter a security key PIN then click OK for next step.



8. Once **PIN** has been set up enter it on the **Windows Hello setup**.



9. **Touch** the fingerprint sensor area repeatedly.



10. **Continue lifting and touching** the sensor to read fingerprint.



11. Click **Close** to finish fingerprint enrollment or **Add another finger** to set up another fingerprint.



12. To remove the fingerprint from the USB dongle click on **remove**.

